

MONTHLY MEMBERSHIP PROGRESS REPORT

LOCATION INDIA

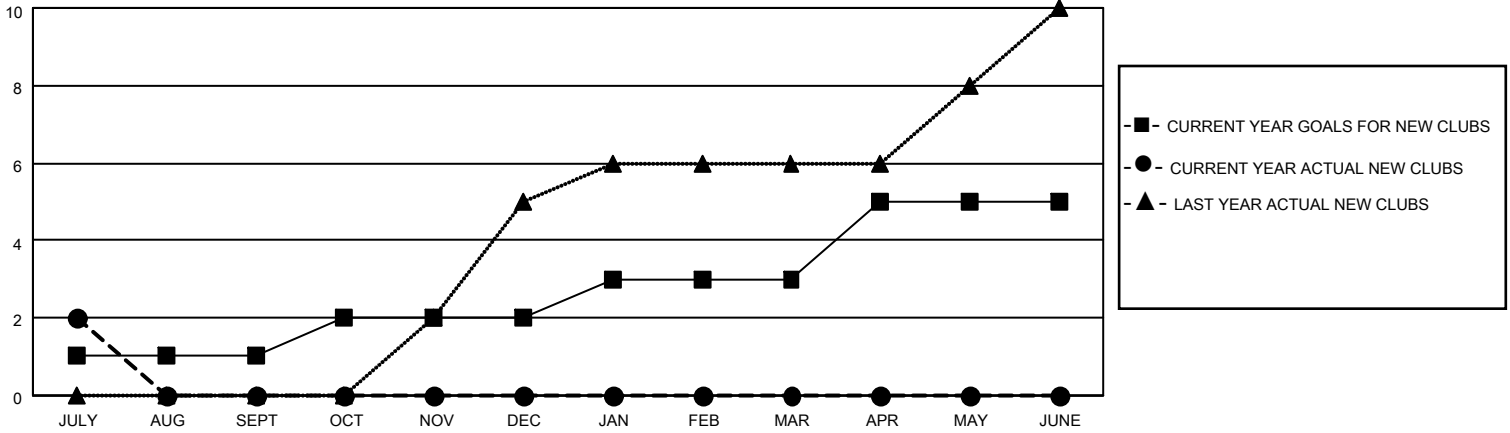
District 3234D1

Results as of: 7/31/2021

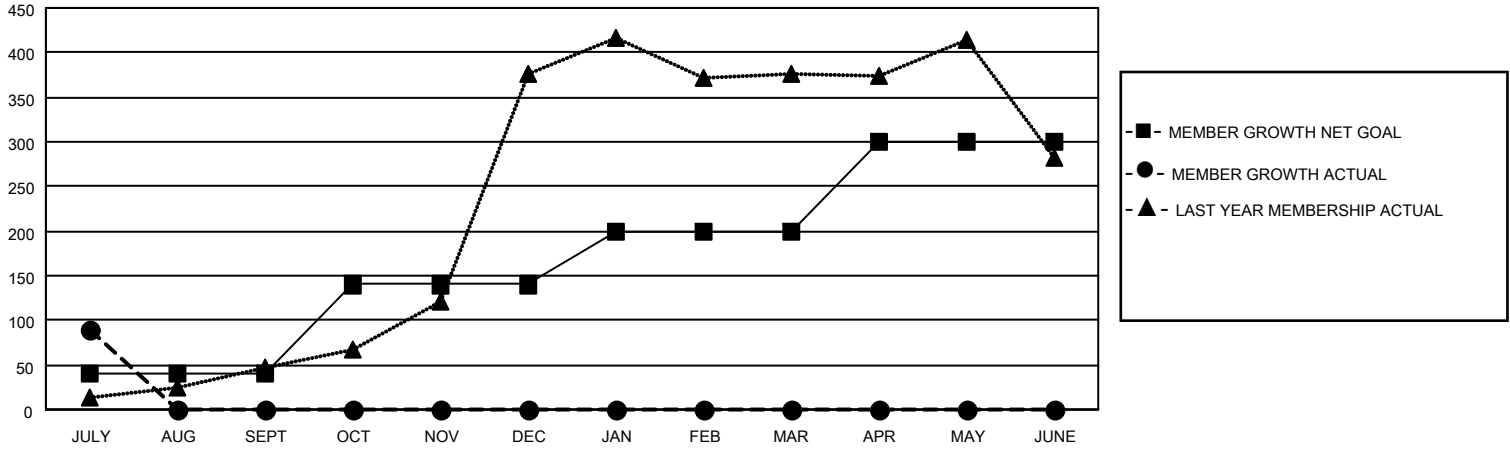
Clubs			
RESULTS FOR 2021-2022			
QUARTER	NEW CLUB GOAL	NEW CLUBS	DROPPED CLUBS
JULY/AUG/SEPT	1	2	0
OCT/NOV/DEC	1	0	0
JAN/FEB/MAR	1	0	0
APR/MAY/JUNE	2	0	0

Members			
RESULTS FOR 2021-2022			
QUARTER	MEMBER GROWTH NET GOAL	MEMBER GROWTH ACTUAL	DROPPED MEMBERS ACTUAL (including transfers)
JULY/AUG/SEPT	40	109	18
OCT/NOV/DEC	100	0	0
JAN/FEB/MAR	60	0	0
APR/MAY/JUNE	100	0	0

GOALS AND ACTUAL NEW CLUBS CUMULATIVE



GOALS AND ACTUAL MEMBERS CUMULATIVE



DROPPED CLUBS: 0

9 CLUBS OF 70 ADDED 1 OR MORE NEW MEMBERS

GENDER DISTRIBUTION

MALE 1,839 (72.34%)
 FEMALE 703 (27.66%)

DROPPED MEMBERS

[CLICK HERE FOR CUMULATIVE MEMBERSHIP DATA](#)

DECEASED	1
CLUB CANCELLED	0
OTHER	17
TOTAL	18

TOTAL FAMILY UNIT MEMBERS	910
FAMILY MEMBERS PAYING HALF DUES	468